

07A24 Board Specification

- Board general specification

Board code	07A24
Board Description	-----
Board Dimension	25 x 20 mm
Project	-----
Date	15/05/2024
Revision	A

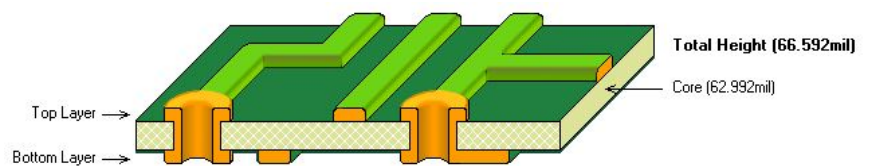
- Board files list

Description	File name	File format
Top Layer	07A24.GTL	Gerber RS274X
Bottom Layer	07A24.GBL	Gerber RS274X
Top Solder Mask	07A24.GTS	Gerber RS274X
Bottom Solder Mask	07A24.GBS	Gerber RS274X
Top Paste Mask	07A24.GTP	Gerber RS274X
Top Overlay	07A24.GTO	Gerber RS274X
Bottom Overlay	07A24.GBO	Gerber RS274X
Mechanical	07A24.GM1	Gerber RS274X
NC Drill	07A24.TXT	
NC Drill Report	07A24.DRR	Excellon

- Board layer stackup (standard)

- Solder, 10 um (0.4 mil)
- Top layer, rame, 35 um (1.378 mil)
- Core, 1.6 mm (62.992 mil)
- Bottom Layer, rame, 35 um (1.378 mil)
- Solder, 10 um (0.4 mil)

Total, 1690um (66.648 mil)



- Board solder resist: Blue

- Silkscreen printing: White